

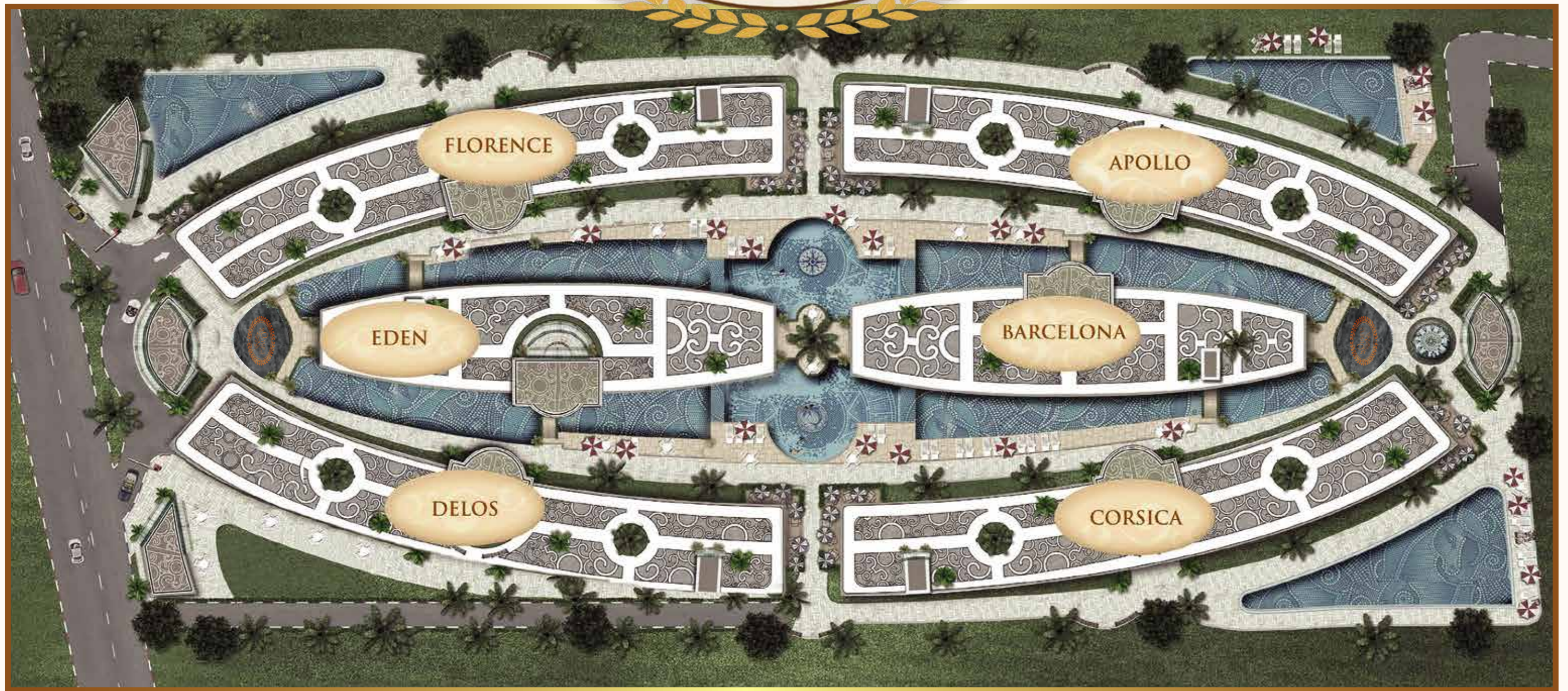


**TRULY A NEW WAY OF LIFE**

**CENTRAL PATTAYA**



Olympus City Garden, Discover Modern Lifestyle In Central Pattaya,  
Brand New And Elegant Luxury Condominium



The exteriors of the 8-story buildings reflect a theme of classically clean lines and Mediterranean accents amid the flowering gardens, butterfly garden, cactus garden, pools, and fountains.



1 BEDROOM SUITE



1 BEDROOM OPUS COMBINED UNIT



2 BEDROOM LEGEND COMBINED UNIT

## SMART DESIGN UNIT LAYOUTS



Global Top Group © All Rights Reserved

# OLYMPUS CITY GARDEN

## TRULY A NEW WAY OF LIFE



**LUXURY**  
Experience luxurious lifestyle



**COMFORT**  
Safe and secured living



**CONVENIENCE**  
Leisurely accessible



**DINE**  
Satisfy and indulge your cravings



**EXPLORE**  
Take a journey and discover life



**SHOPS**  
Have fun and enjoy shopping around

If you're looking to invest in a property in the land of smiles,  
Global Top Group's Pattaya Condo Properties is a secured and reliable investment.

# OLYMPUS CITY GARDEN

IS THE BEST LOCATION IN THE HEART OF TOWN



Olympus City Garden is strategically located in the City Center with convenient access to all modes of public transportation and main roads. Pattaya's many tourist attractions, beaches, international schools, hospitals and night markets are within easy reach. This convenience of location drives profitability in all our projects



**ICONIC DESIGN**

# INTERIORS



All units include high quality built-in fittings in the kitchens and bathrooms, made to suit size. Air conditioning and Water heating units are standard. Optional Smart contemporary furniture packages will also be available for those that prefer a ready-to-move-in touch.

Each luxurious condominium unit is designed and finished to international standards. Modern sliding doors conserve space, while cleverly-positioned Built-in cabinets maximize storage room without sacrificing elegance or comfort. Modern kitchens and baths are beautifully finished and of European design.



# REJUVENATE YOUR SPIRIT



Olympus is the center of a healthy lifestyle, with saunas, Luxury gyms & jogging track rooftop, and five swimming pools, including one of the largest pools in Pattaya. Gardens and much more to keep the body young and the mind sharp.

# OLYMPUS CITY GARDEN



Olympus is elegant, with spectacular grounds including lush gardens of every variety, cooling fountains and waterfalls, and wide pedestrian walkways to stroll along in the cool of the evenings as you leave your favorite local bistro

# PICTURESQUE



If a luxurious life in a chic condominium is your dream, wake up to the lavish boutique concept available now in Pattaya's most desirable location



DEVELOPED BY THAILAND'S LEADING PROPERTY DEVELOPER  
WITH MORE THAN 40 YEARS OF EXPERIENCE

# OFFERING BEST RENTAL MANAGEMENT



# WITH HIGH RETURN ON INVESTMENT

# GREAT INVESTMENT

## THE MOST PROFITABLE INVESTMENT IN PATTAYA



Olympus City Garden property value is expected to appreciate rapidly due to its iconic architectural design, central location and unique suite of on-site amenities. Opulence, convenience and value make this project a perfect investment income generator and/or luxury getaway for your holiday.

# MANAGEMENT RENTAL SERVICES

## REAL ESTATE



Global Top Group offers its customers a One-Stop Service for all requirements. After Sales Service, Management service, Condo Rental service, and Maintenance service, we offer professional consultation before investments are made for the best outcomes.

# PREDICTABLE RETURN

## WITH BANK LOAN AVAILABLE



Bank Support



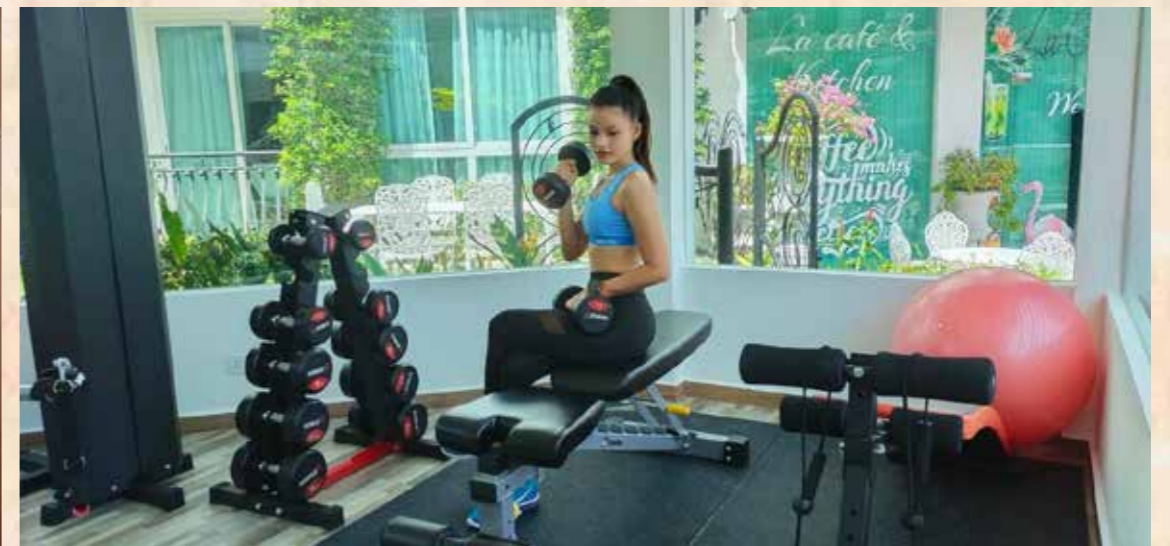
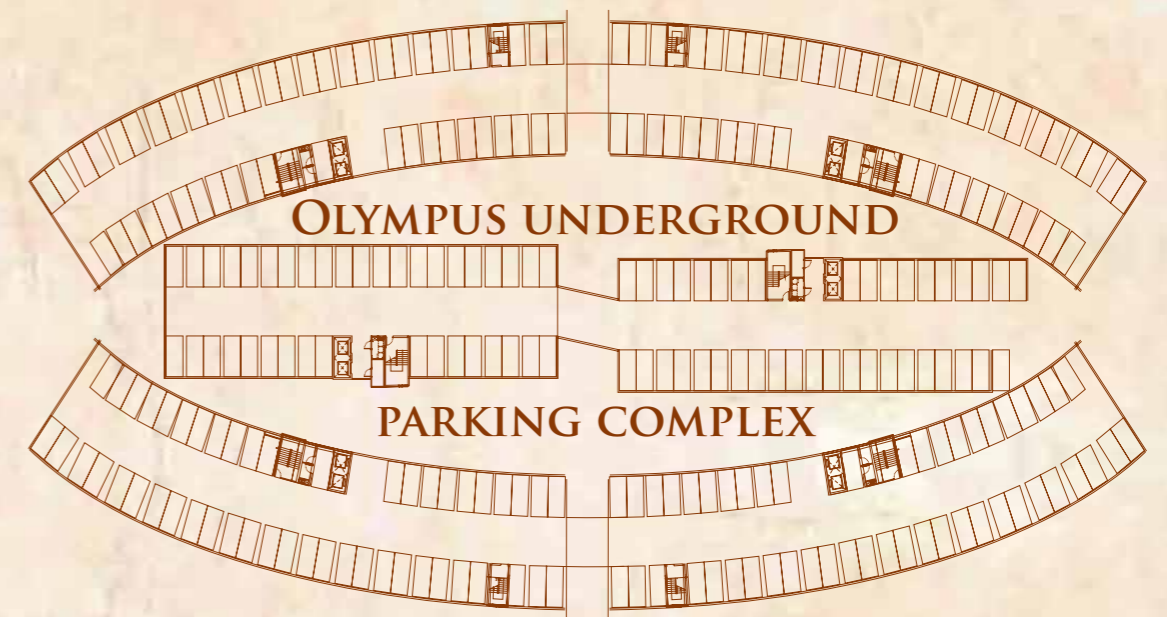
# CONVENIENCE, LIFESTYLE, AND ELEGANCE



## TRULY A NEW WAY OF LIFE.

# OLYMPUS CITY GARDEN

## FACILITIES, INTERIORS & PARKING



### FACILITIES INCLUDE:

SWIMMING POOLS  
CONCIERGE SERVICE  
STEAM ROOMS  
JACUZZIS & SAUNAS  
YOGA ROOMS  
OPEN AIR SKY-GYMS

JOGGING TRACK  
THEMED GARDENS  
SHOPS AND STORES  
CAFÉS AND RESTAURANTS

SECURITY & CCTV  
RENTAL MANAGEMENT  
FULLY ENCLOSED SECURE PARKING  
FIBER OPTIC & WIFI INFRASTRUCTURE





# GARDENS & POOLS



The spacious grounds the complex occupies features beautifully landscaped gardens with several pools, relaxation spots and a childrens playground; Remove the hustle and bustle of the city and unwind in the sanctuary of Olympus. With on-site convenience store carries everything you might need to make a lazy afternoons' lounging more enjoyable.

# SECURE AND CHILD FRIENDLY FOR FAMILIES



# WATCH LIFE HAPPEN

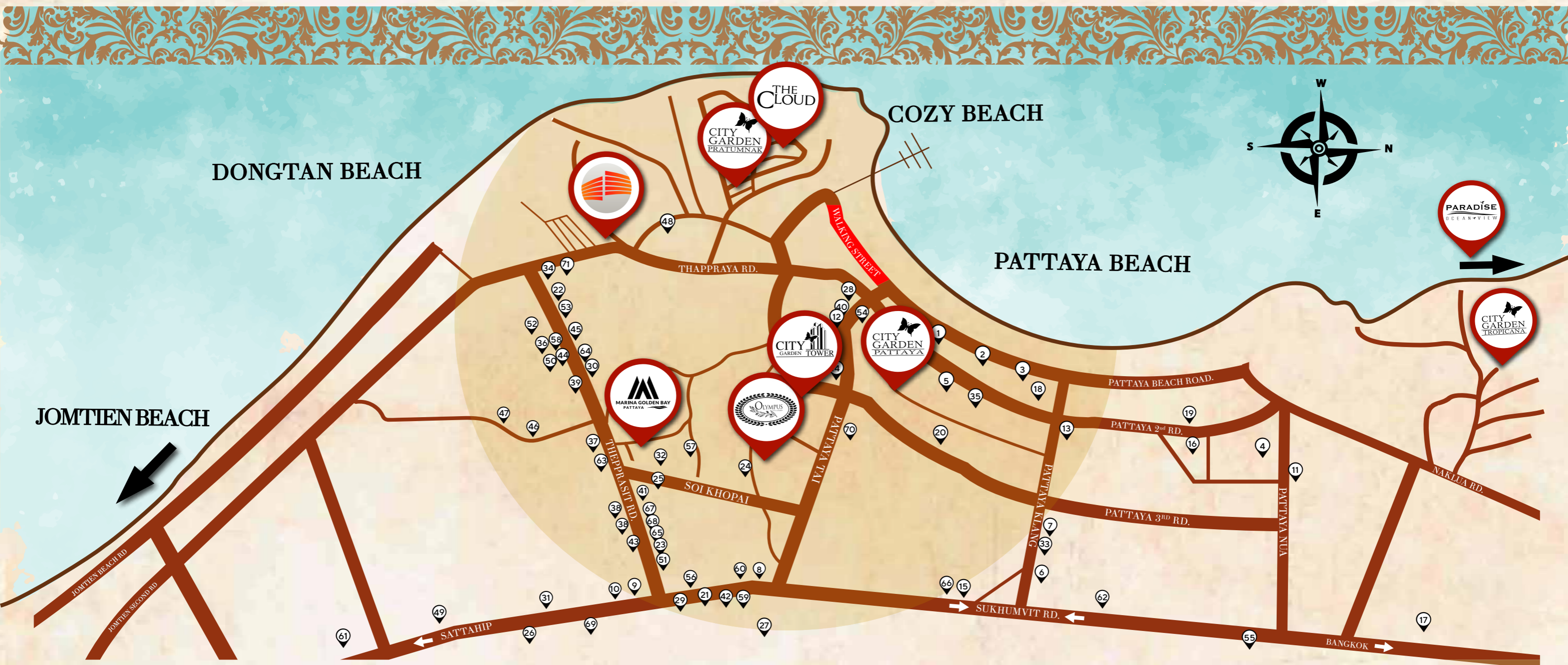


# PERFECT LOCATION



Olympus is centrally located, with easy access to the beach areas, Central Festival shopping mall, and Sukhumvit Road. It is also located close to the prestigious international Aksom School.

# CENTRAL PATTAYA MAP



## POPULAR SHOPPING MALLS:

1. Royal Garden Plaza
2. Mike Shopping Mall
3. Central Festival Pattaya Beach
4. Terminal 21
5. Avenue Pattaya
6. Harbor Mall
7. Big C Extra
8. Big C South Pattaya
9. Outlet Mall
10. Tesco Lotus Sukhumvit
11. Tesco Lotus North Pattaya
12. Tukcom (IT Mall)
13. Tops Supermarket
14. Friendship
15. King Power Duty Free
16. Central Marina

## HOSPITALS:

17. Bangkok Hospital Pattaya
18. Memorial Hospital
19. Pattaya International Hospital
20. Pattaya City Hospital
21. Bangkok Hospital Branch
22. Smile Dental Clinic (Theprasit)
23. Tara Physical Therapy Clinic

## SCHOOLS:

24. Aksorn Pattaya School
25. Aksorn Theprasit School
26. Satit UdomSeuksa School
27. Burapha English Program School (B.E.S.T)
28. Government Pattaya School
29. Suriya Music Center
30. Siam Computer and Language School

## CONVENIENCE STORES:

31. Makro
32. Tesco Lotus Express
33. Foodland
34. Foodmart
35. Villa Market Pattaya
36. Fruit Market Ratanakorn
37. Electric Shop
38. Theprasit Night Market
39. Second Hand Market & Vintage Memorabilia Theprasit
40. Second Hand Market & Vintage Memorabilia Pattaya Tai
41. Handware store
42. Gecko Lighting and Decor
43. Wholesale Pharmacy

## ENTERTAINMENT:

44. Colosseum Show
45. Kaan Show
46. Xbungy - Pattaya Bungy Jump
47. Go Karts Speedway
48. Big Buddha Hill Viewpoint
49. Underwater World
50. Yunomori Onsen and SPA
51. Theprasit Boxing Stadium
52. Elephant Village Pattaya
53. Yoga Pattaya Center
54. Wat Chai temple
55. Mini Siam (Miniatures Park)
56. Health Land Spa & Massage
57. Venum Training Camp Thailand

## SHOPS FOR HOME:

58. Decorum Furniture Shop
59. Chic Republic
60. Baan and Beyond
61. Thai Watsadu
62. Index Living Mall
63. Curtain Outlet Shop

## GASOLINE STATIONS, BANKS:

64. Siam Commercial Bank
65. Bangkok Bank Theprasit
66. B Quik (Car Repair Station)
67. PTT Gas Station Theprasit
68. MP Gas Station Theprasit
69. PTT Gas Station Sukhumvit
70. Shell Gas Station Pattaya Tai
71. Bus Station Thappraya

# EASTERN ECONOMIC CORRIDOR (EEC)



# BEST CENTRAL LOCATION



# IN THE HEART OF PATTAYA

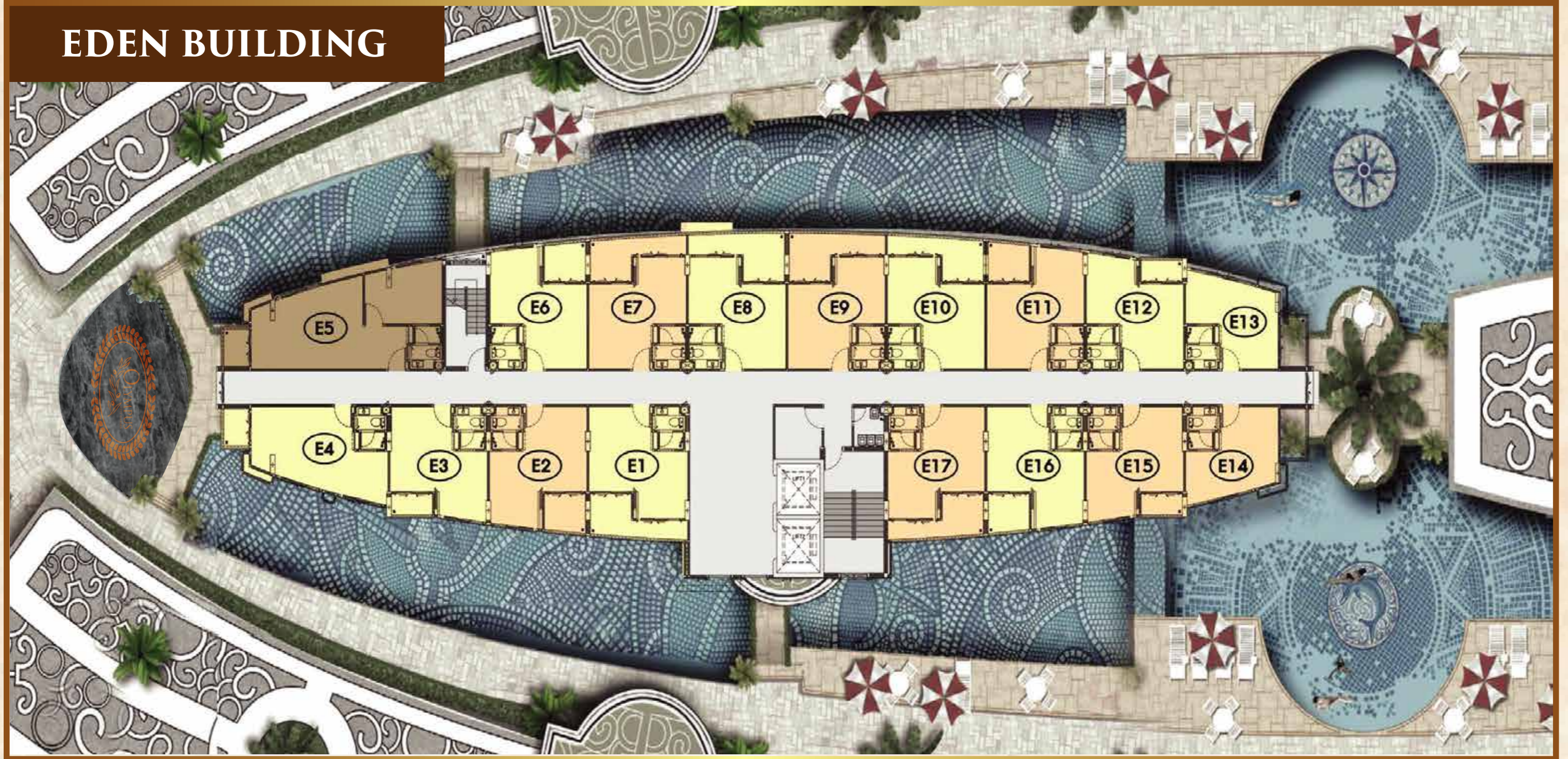
# FLORENCE BUILDING



# APOLLO BUILDING

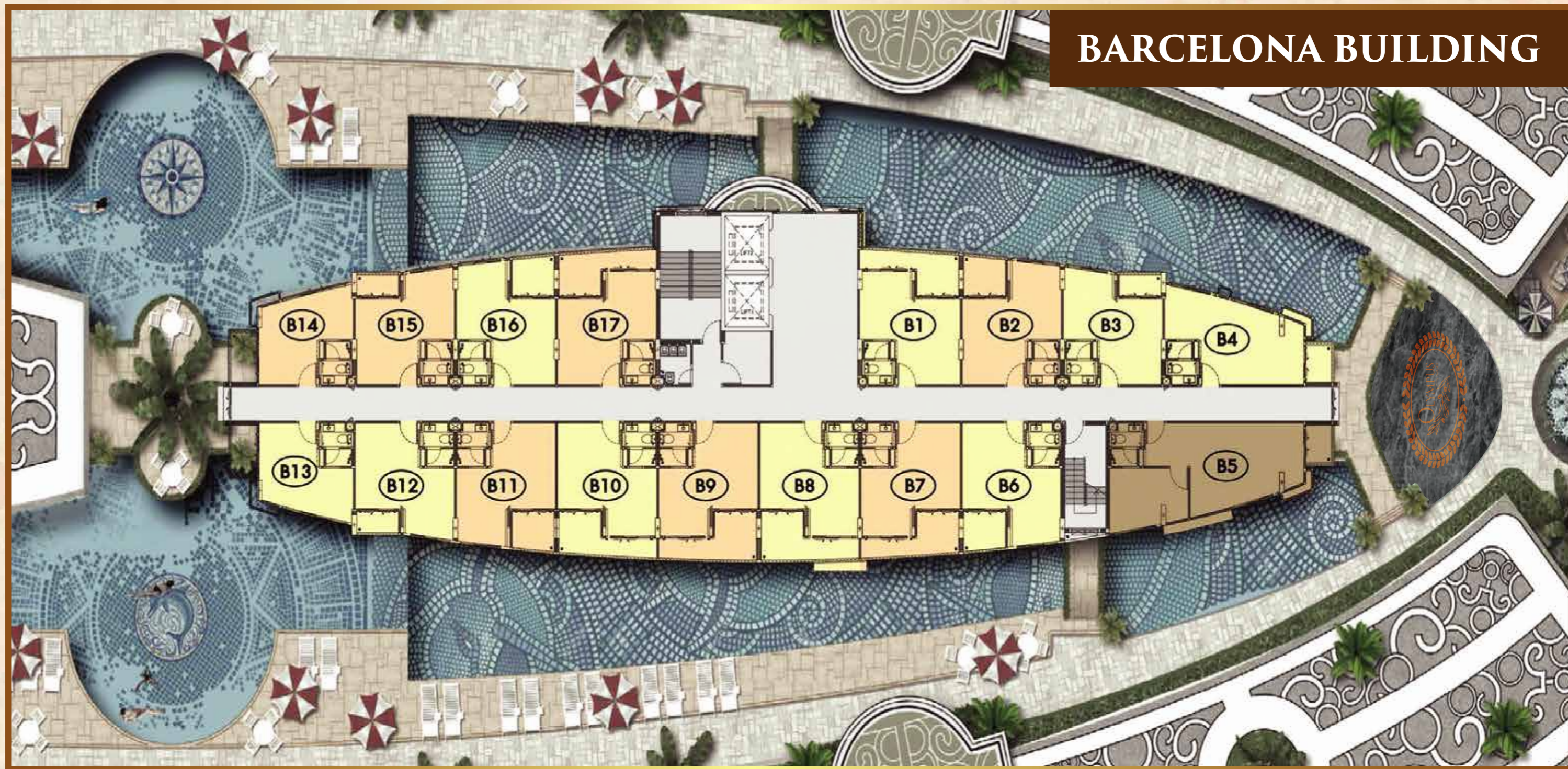


# EDEN BUILDING



The Basement of all Six buildings are dedicated parking areas for our owners, guests and visitors. Security guards and CCTV will be employed by the project to ensure the safety of your property. For convenience, vehicles can enter or exit the property on 3 sides.





The Water Features And Gardens Are Designed To Highlight The Sense Of Your Being Situated In A Park Environment , Creating A Quiet Seclusion From The Surrounding City.



# DELOS BUILDING



# CORSICA BUILDING

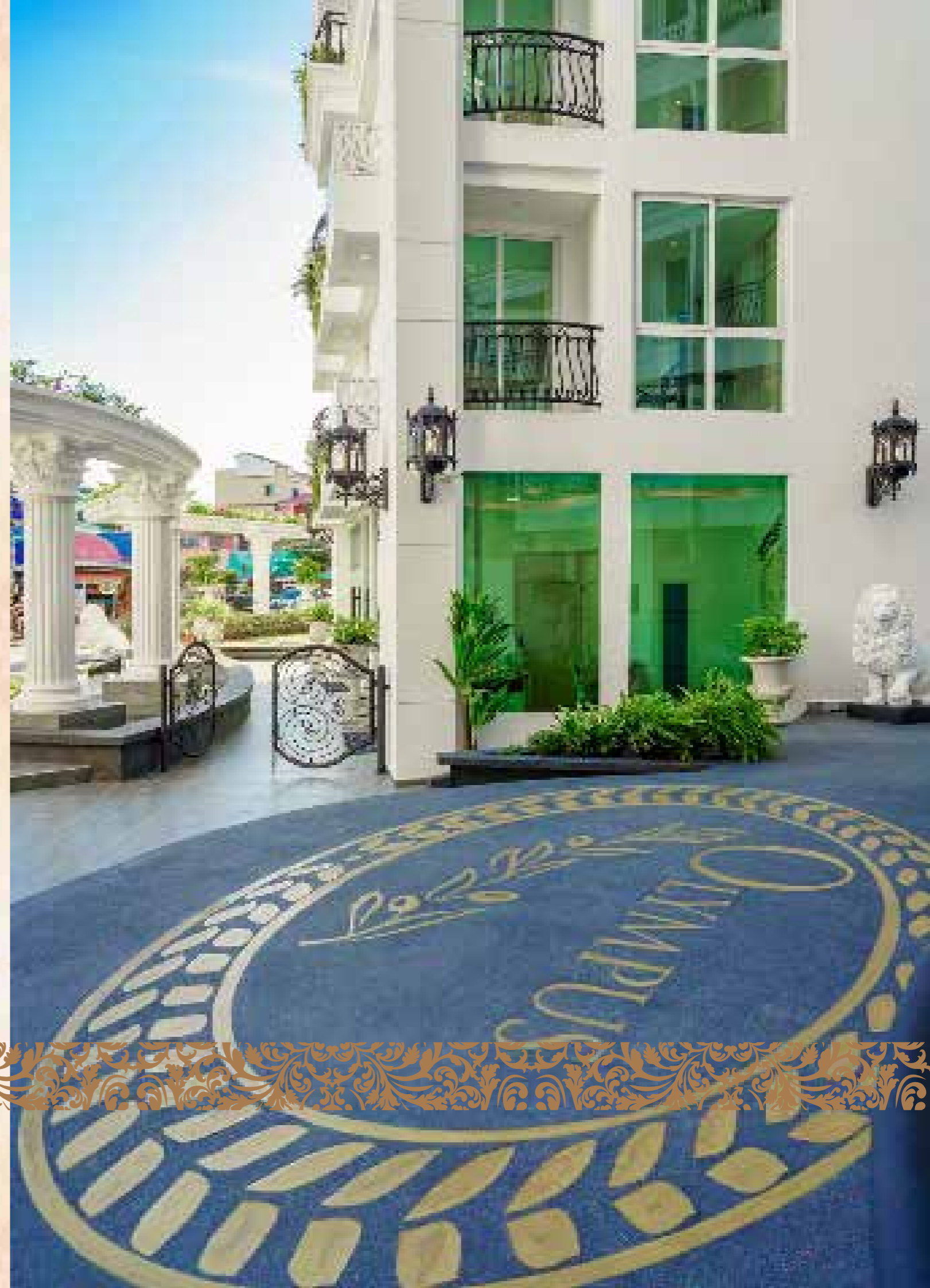




TRULY A NEW WAY OF LIFE

YOU WILL LOVE TO COME HOME TO

CAFES AND RESTAURANTS THAT YOU'LL  
ENJOY WITHOUT HAVING TO LEAVE HOME.



# CONVENIENT AND SECURE



Olympus Is The Center Of A Healthy Lifestyle To Keep The Body Young And The Mind Sharp .  
We Have A Myriad Of Choices To Maintain That Lifestyle ,  
Yoga Class , And Unwind In The Jacuzzi Afterwards .

**SHOPPING MALL COMPLEX NEARBY**



**YOUR LEISURE IS OUR PLEASURE**



## FINEST CONVENIENCE

WITH OVER 700 SQUARE METERS OF COMMERCIAL SPACE, YOU WILL BE SPOILED WITH CHOICES OF PLACES TO ENJOY A MEAL, MEET FRIENDS FOR A DRINK, SHOP FOR GROCERIES, OR SIMPLY WATCH THE WORLD GO BY FROM AN OUTDOOR CAFÉ WITH A PASTRY AND A CAPPUCCINO.



# GREAT VIEWS





**PROFESSIONAL ASSET MANAGEMENT**



**TRULY A NEW WAY OF LIFE**  
**CENTRAL PATTAYA**