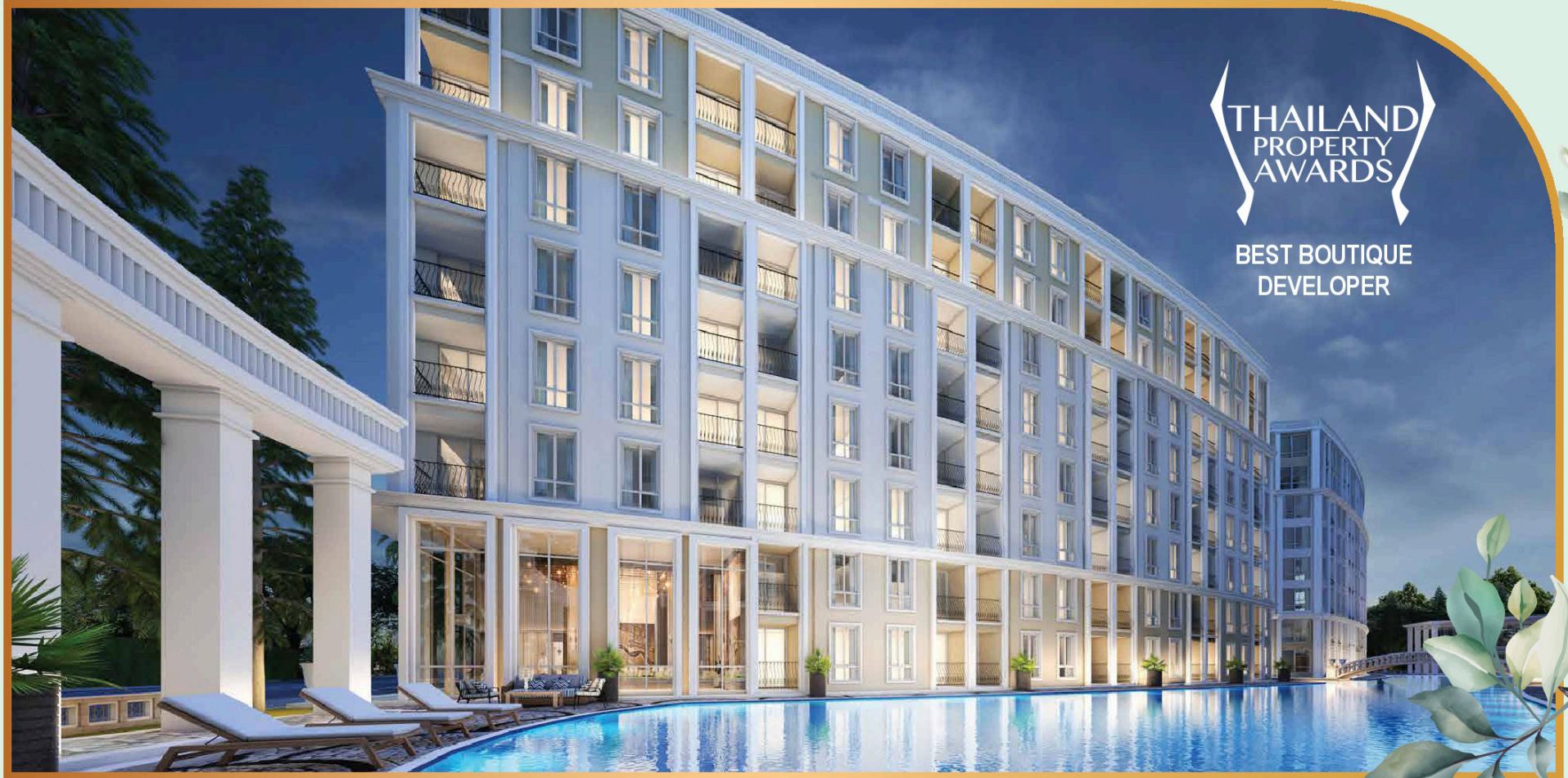




HARMONIA

CITY GARDEN
PATTAYA



THAILAND
PROPERTY
AWARDS

BEST BOUTIQUE
DEVELOPER



TREASURES FOR YOUR LIFE

Harmonia City Garden Condominium is the most exquisite European architectural designed properties located at the very heart of Pattaya



GLOBALTOP GROUP
DELIVERING OUTSTANDING DEVELOPMENTS

HARMONIA
CITY GARDEN
PATTAYA



GLOBALTOP GROUP
DELIVERING OUTSTANDING DEVELOPMENTS

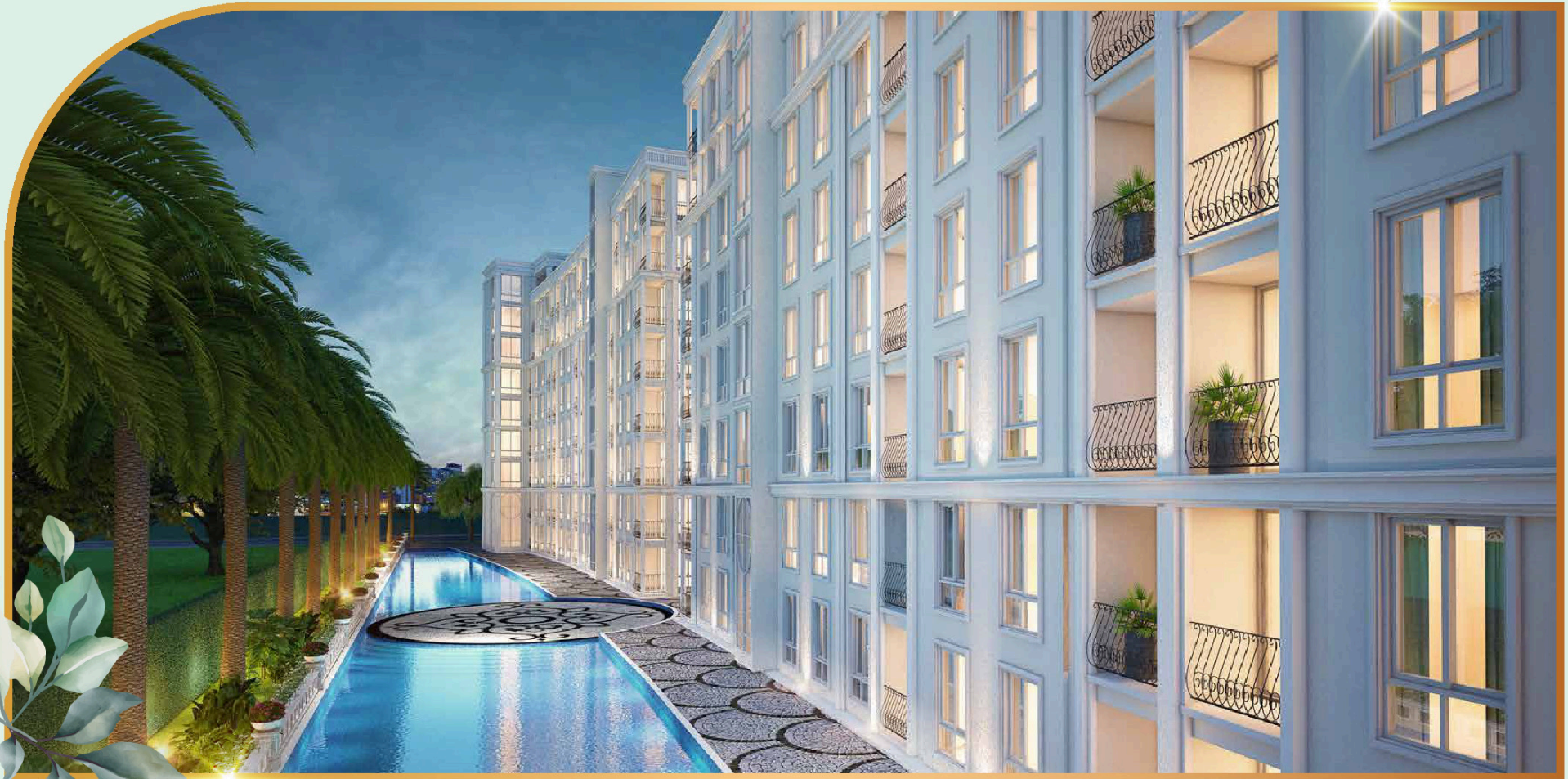
This Condo Development in Pattaya, Thailand is a perfect combination of luxury living, healthy lifestyle, personal wellness, and authentic connection to the unique natural settings of Pattaya City.





Our magnificent development offers the very best quality of life, a stylish designed condo that gives you the feeling of happiness and fulfillment. The ground floor features large communal areas and recreational spaces, including an eye opening swimming pool that wraps around the whole complex, as well as beautiful gardens and more...


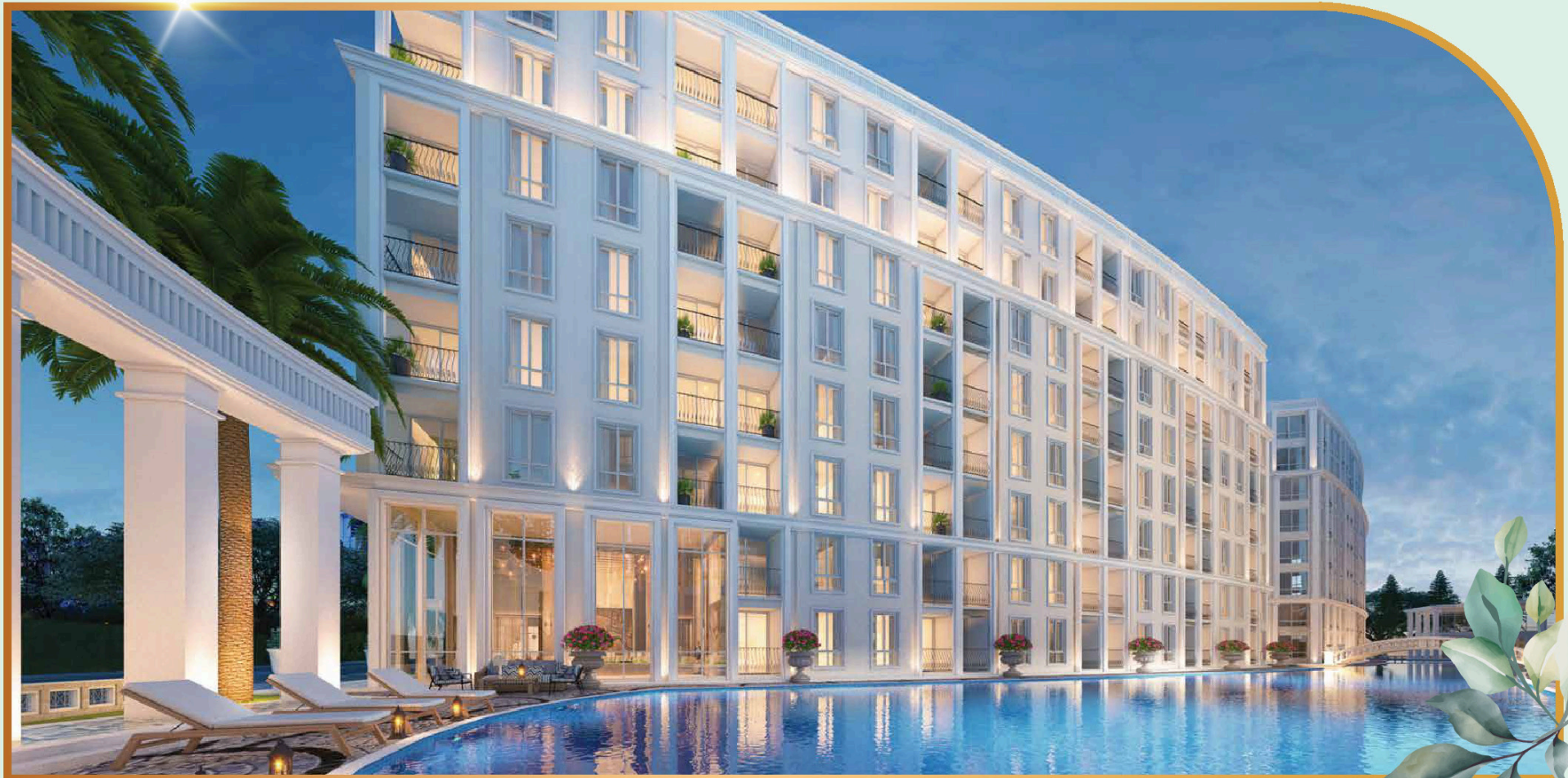




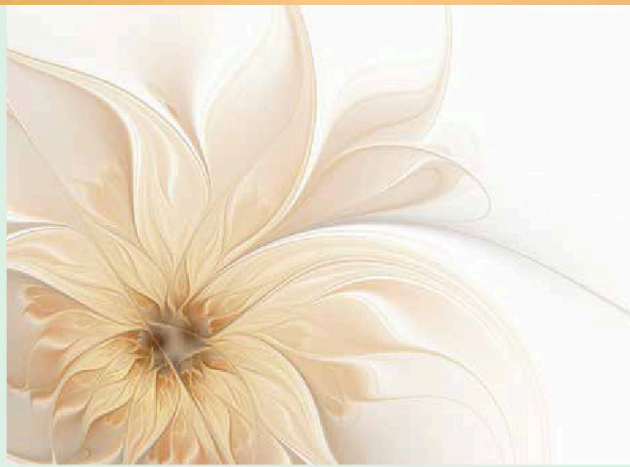
GLOBALTOP GROUP
DELIVERING OUTSTANDING DEVELOPMENTS

This superb low-rise condominium complex is decorated in a welcoming styles that will give you an island vibe to immerse yourself in a sense of harmonious balance.





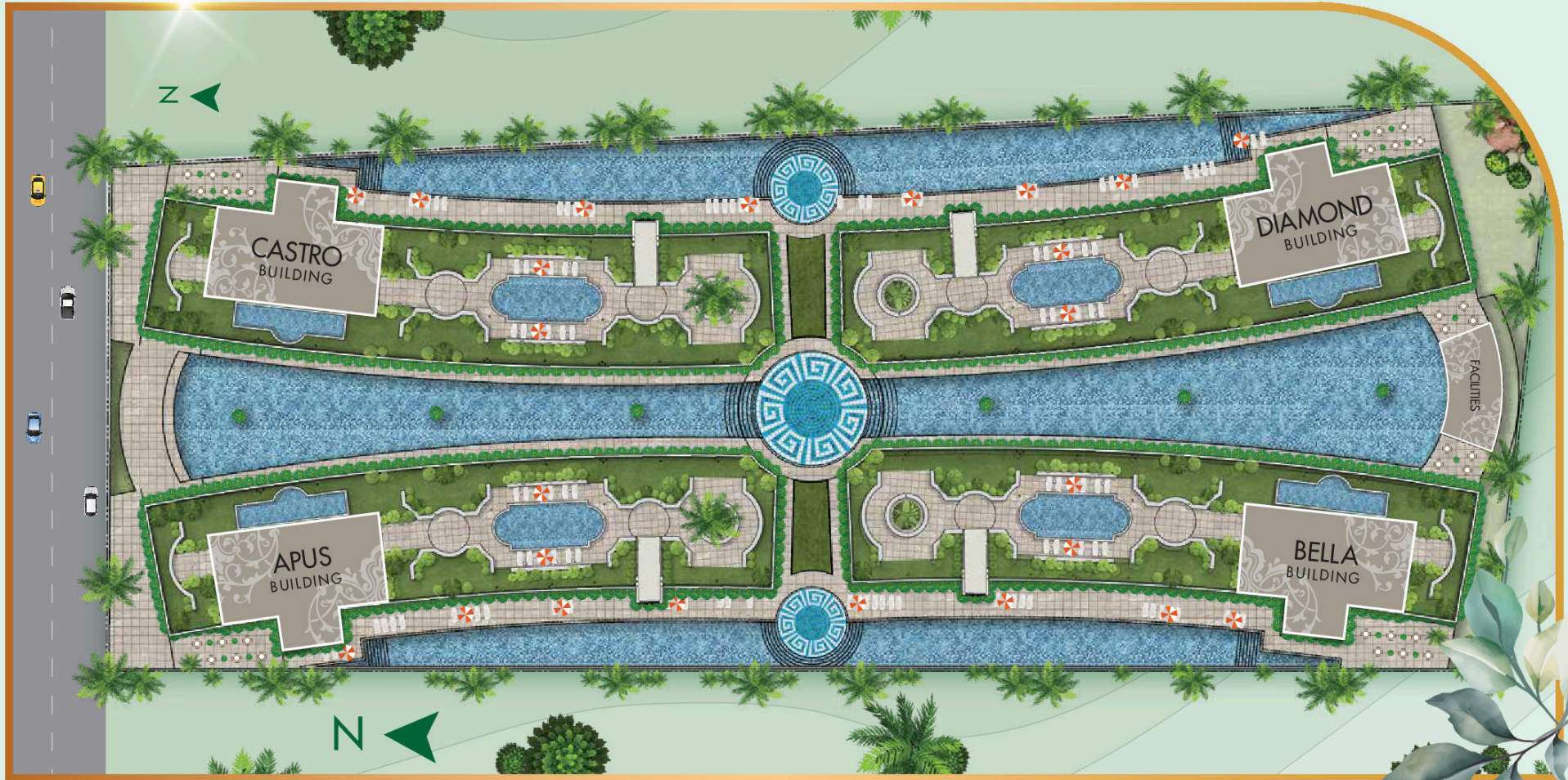
Harmonia consist of 4 Buildings with 8 Floors, each is surrounded by pools fountains, walk-ways and gardens. Underground parking provides easy access to all the buildings and facilities like restaurants, cafe, massage shops and rooftop bar with garden landscape.



A true oasis of five - star leisure & healthy life style living complex with an island vibe inside one compound!



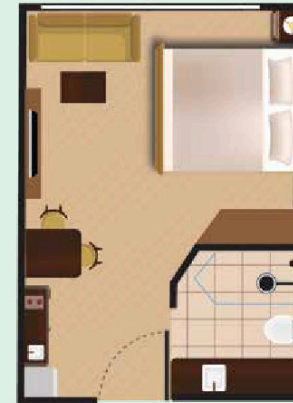
MASTER PLAN



ROOM TYPES & FACILITIES

-  SWIMMING POOL
-  CONCIERGE
-  STEAM ROOM
-  SAUNA ROOM
-  YOGA ROOM
-  JACUZZI
-  GYM
-  JOGGING TRACK
-  CHILDRENS PLAY AREA
-  THEME GARDEN
-  MASSAGE SHOP
-  CAFE'
-  RESTAURANT

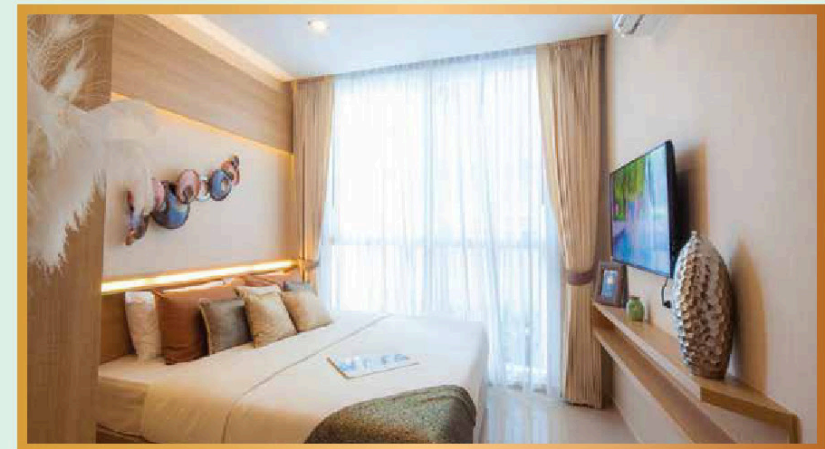
-  MULTIPLE ACCESS ROADS
-  MANNED SECURITY & CCTV CAMERAS
-  RENTAL MANAGEMENT
-  FULLY ENCLOSED SECURED PARKING
-  FIBER OPTIC & WIFI INFRASTRUCTURE
-  ROOFTOP GARDEN & WATER FALL POOL



STUDIO ROOM

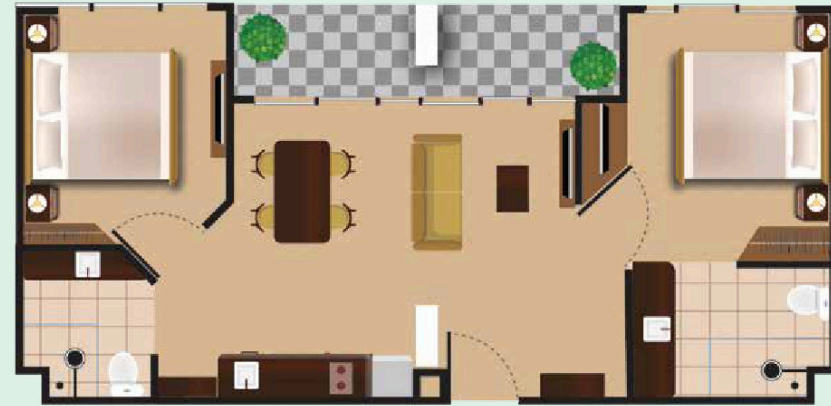


ONE BEDROOM

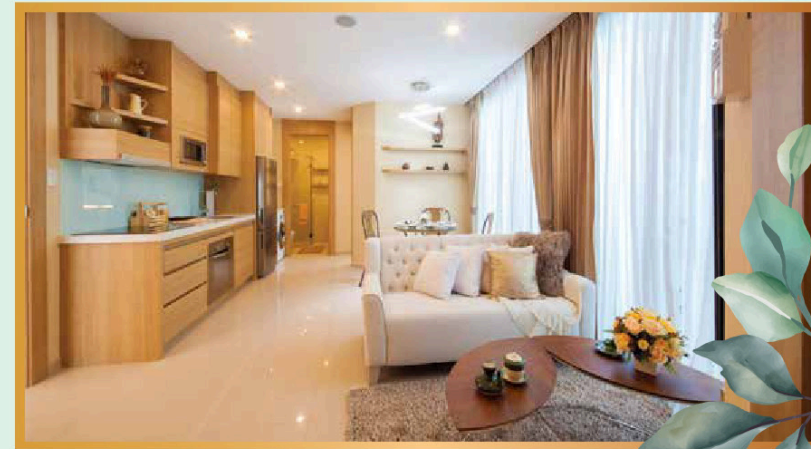




ONE LARGE BEDROOM

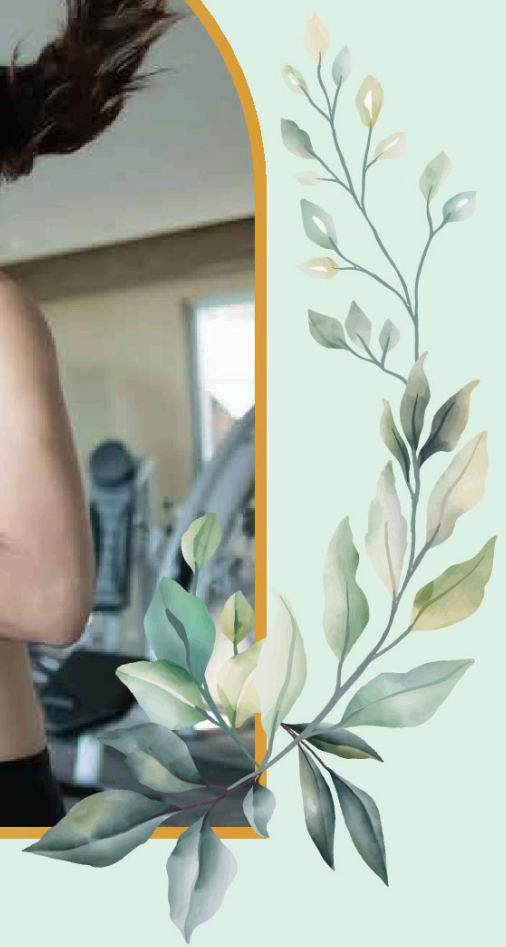


TWO BEDROOM



Harmonia City Garden offers the best of quality and a stylish design that gives you the feeling of happiness and fulfillment whenever you enter your home.





Harmonia City Garden gives you the Happiness and Lifestyle You Deserve.





CENTRAL PATTAYA

HARMONIA CITY GARDEN PROJECT LOCATION 3RD,
REGIONAL LAND2, CENTRAL PATTAYA

HARMONIA
CITY GARDEN
PATTAYA



Harmonia City Garden is situated in a Prime Central Location of Pattaya and is very close to all establishments that you and your family need in your everyday life with easy access to popular attractions in Pattaya.



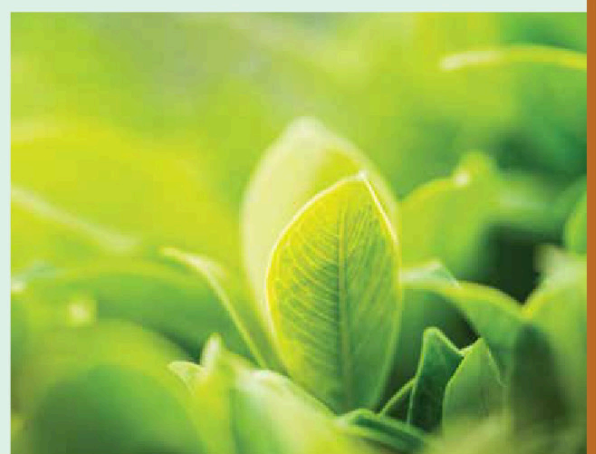


ATTRACTIONS NEARBY



See more of Thailand's famous attractions nearby, only a few minutes from you.

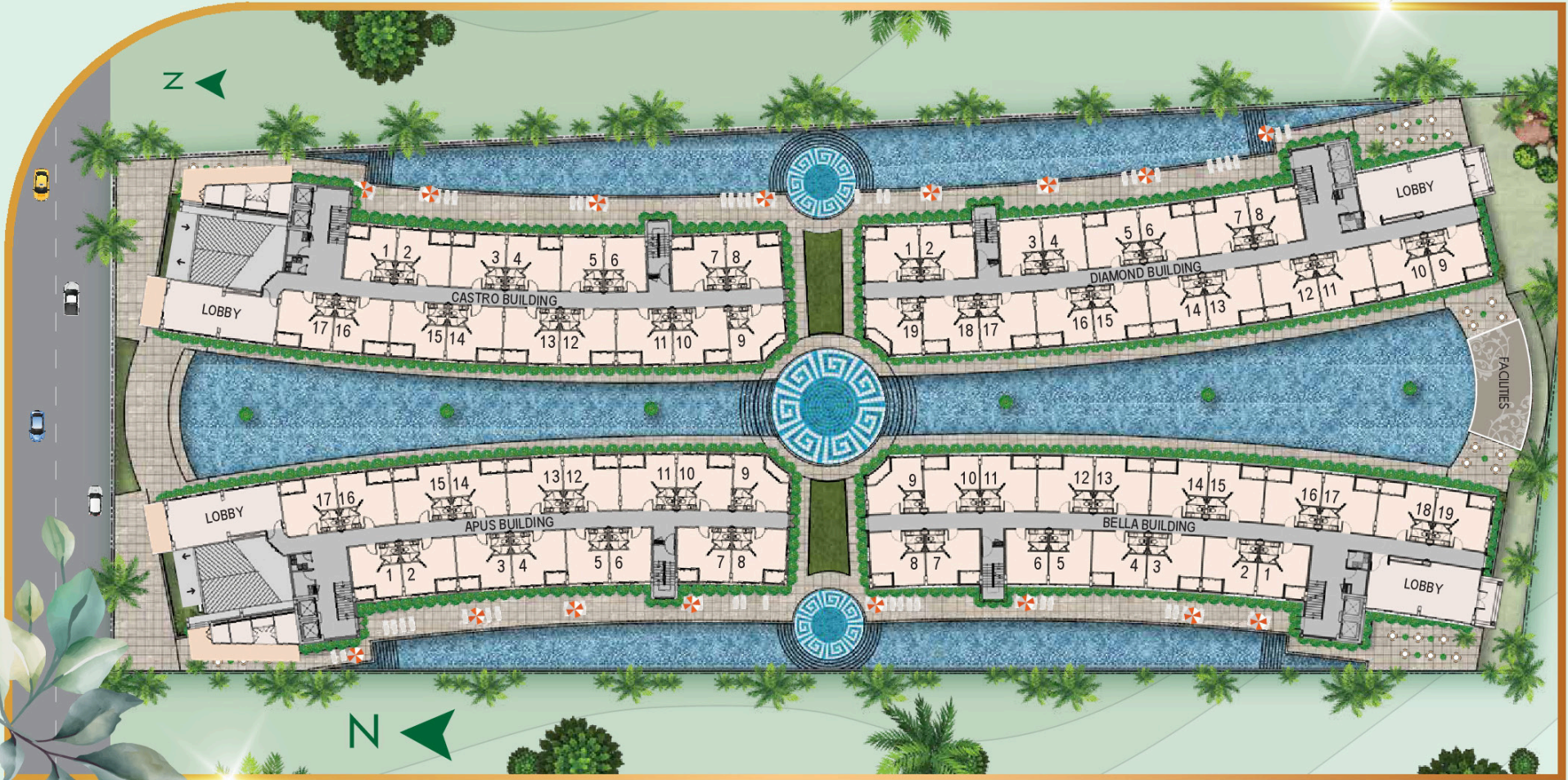


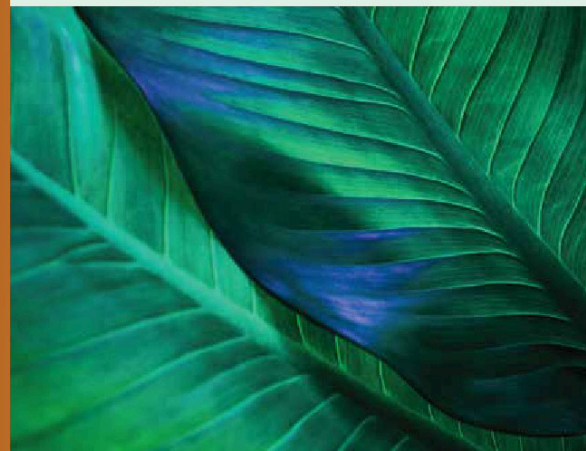




Celebrate Luxury All Around with the 5 Star Facilities at our extravagant Project.

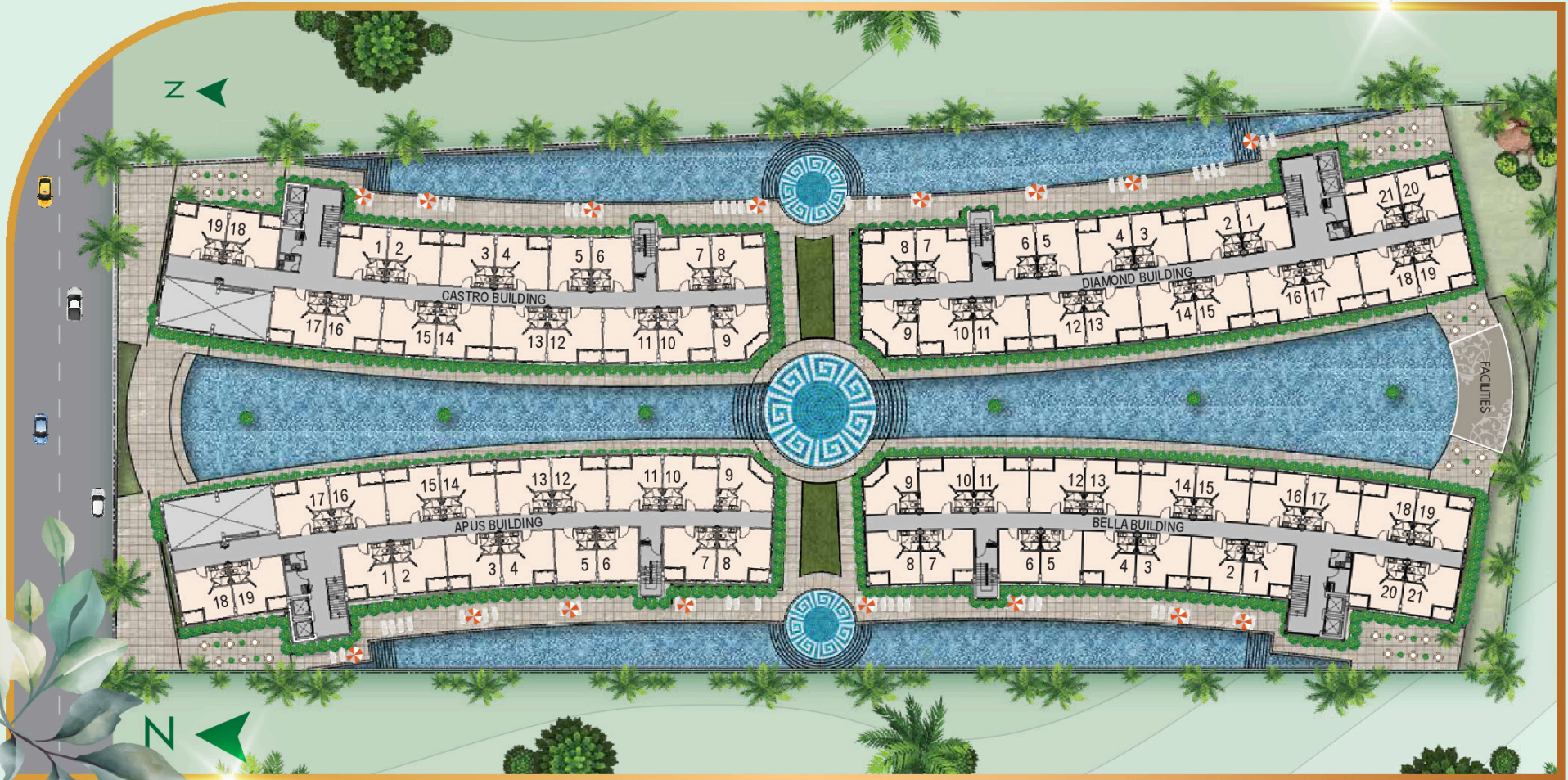
1ST FLOOR



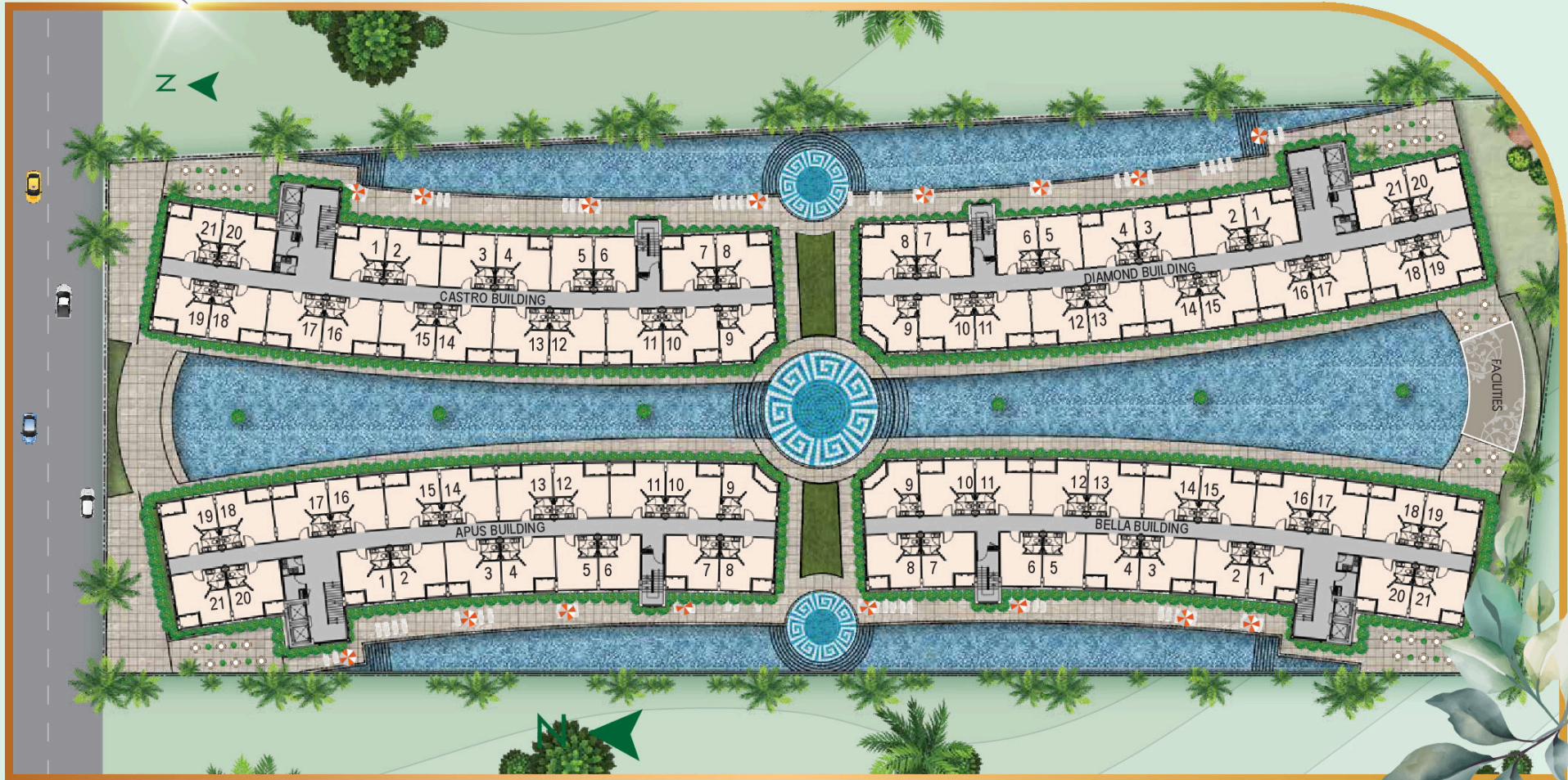


“Harmonia” means harmony between people, the nature and happiness of life with the right company that you can trust.

2ND FLOOR

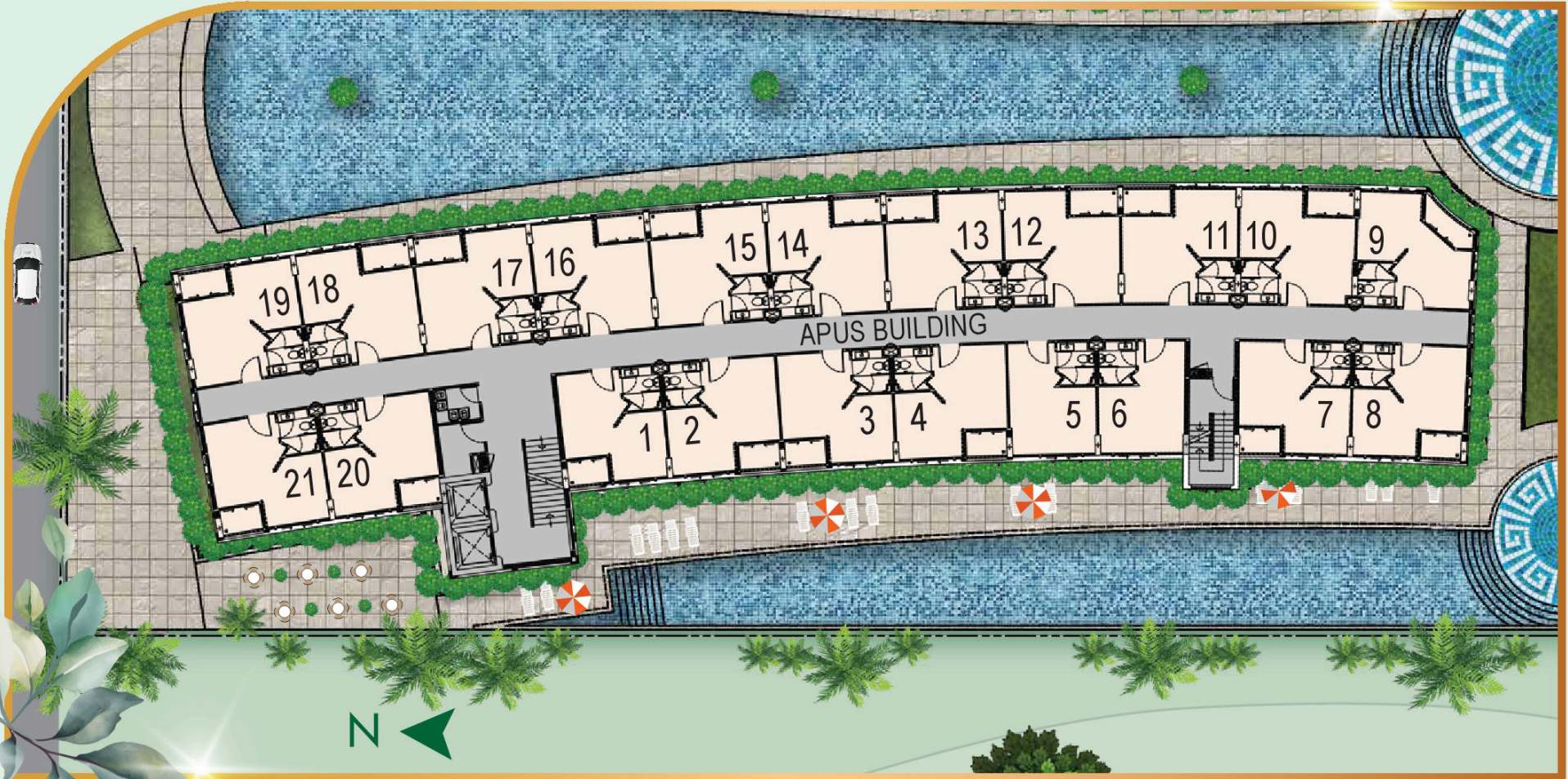


3RD - 8TH FLOOR



APUS BUILDING

3RD - 8TH FLOOR



GLOBALTOP GROUP
DELIVERING OUTSTANDING DEVELOPMENTS



CASTRO

DIAMOND

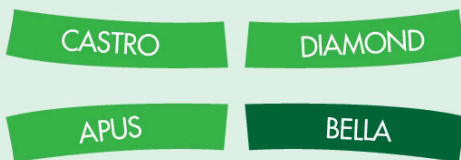
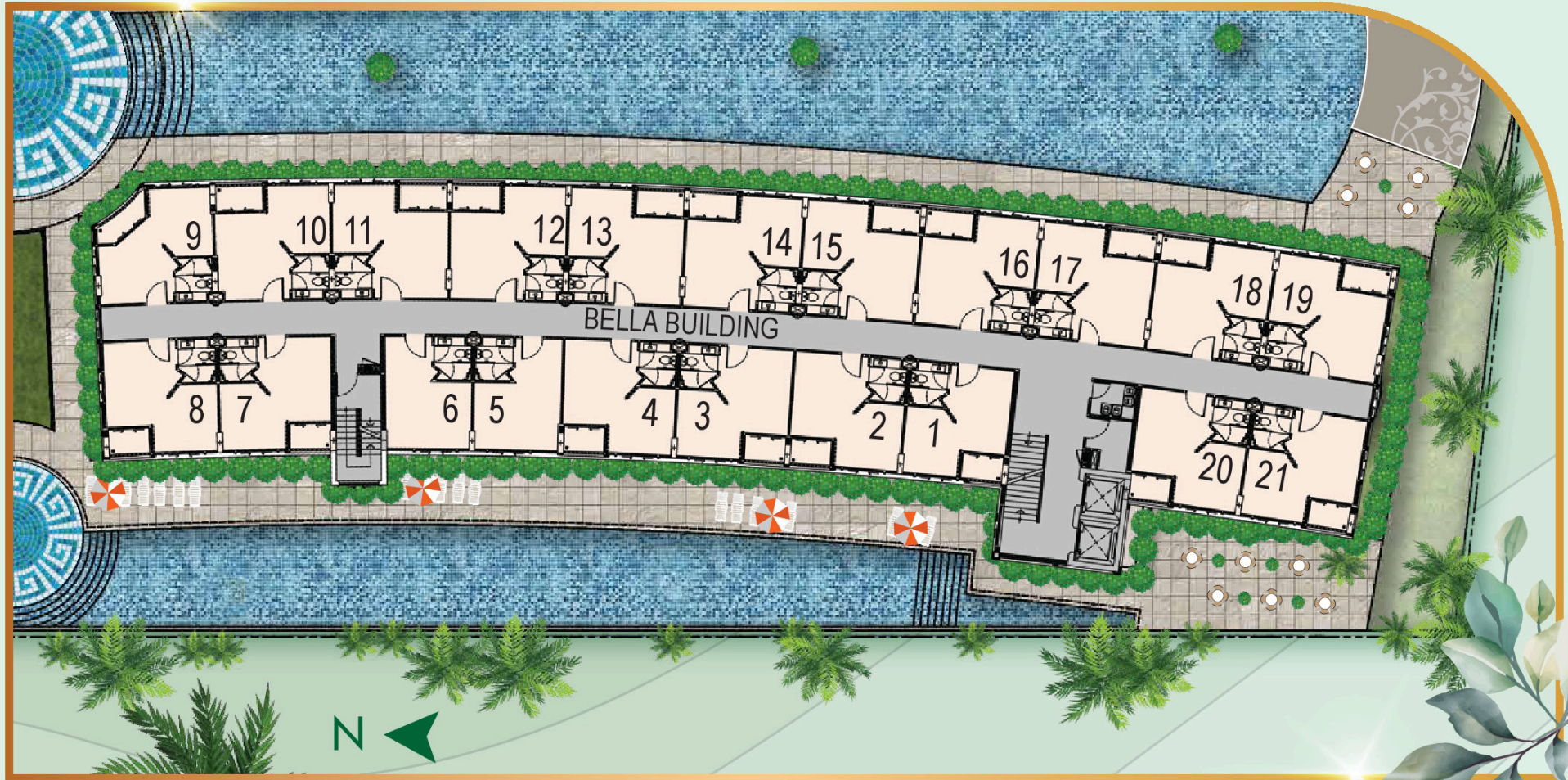
APUS

BELLA



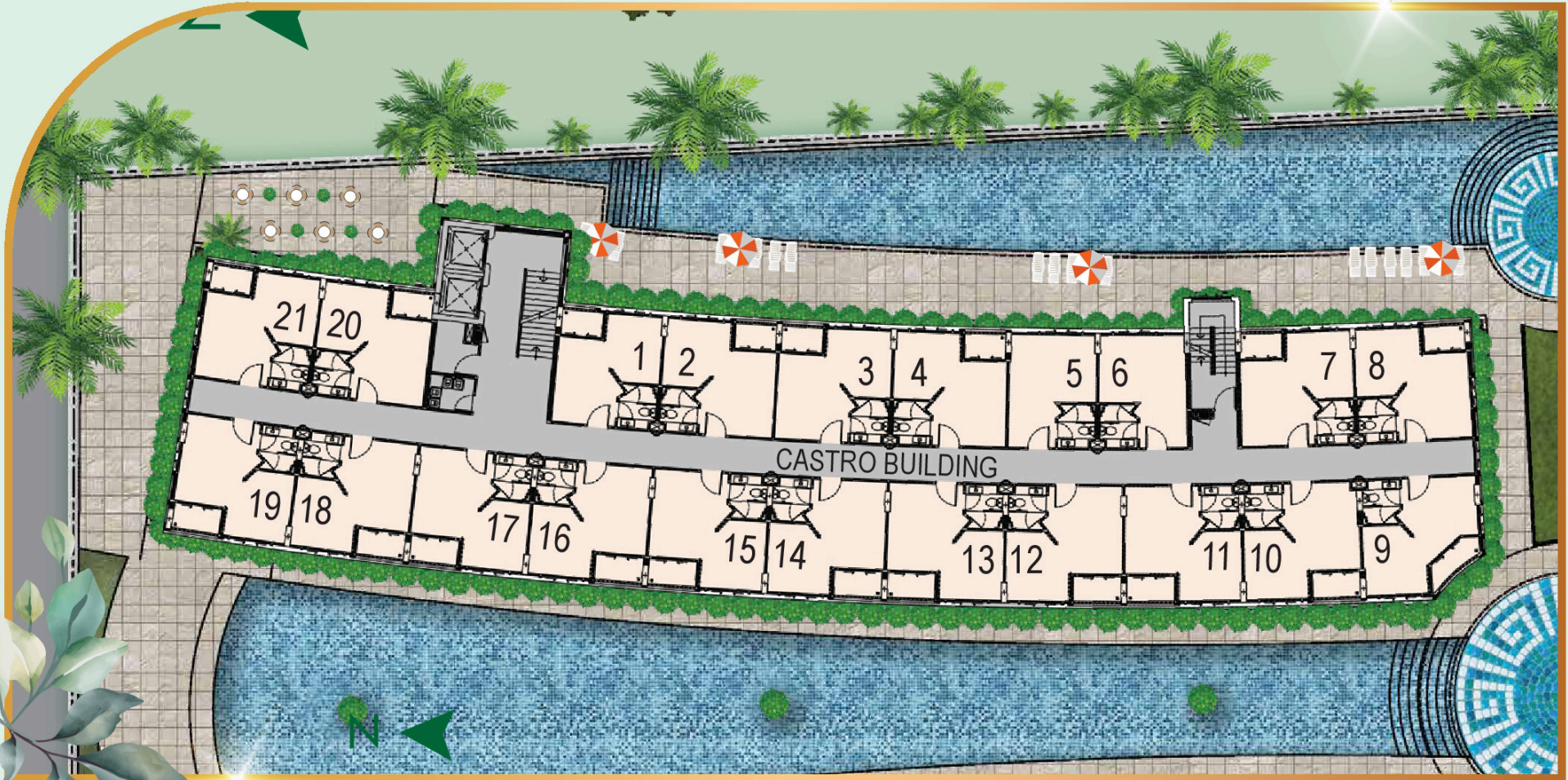
BELLA BUILDING

3RD - 8TH FLOOR



CASTRO BUILDING

3RD - 8TH FLOOR



GLOBALTOP GROUP
DELIVERING OUTSTANDING DEVELOPMENTS



CASTRO

DIAMOND

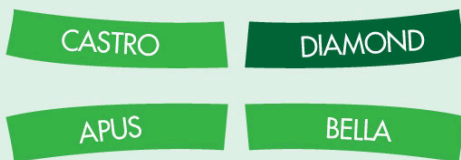
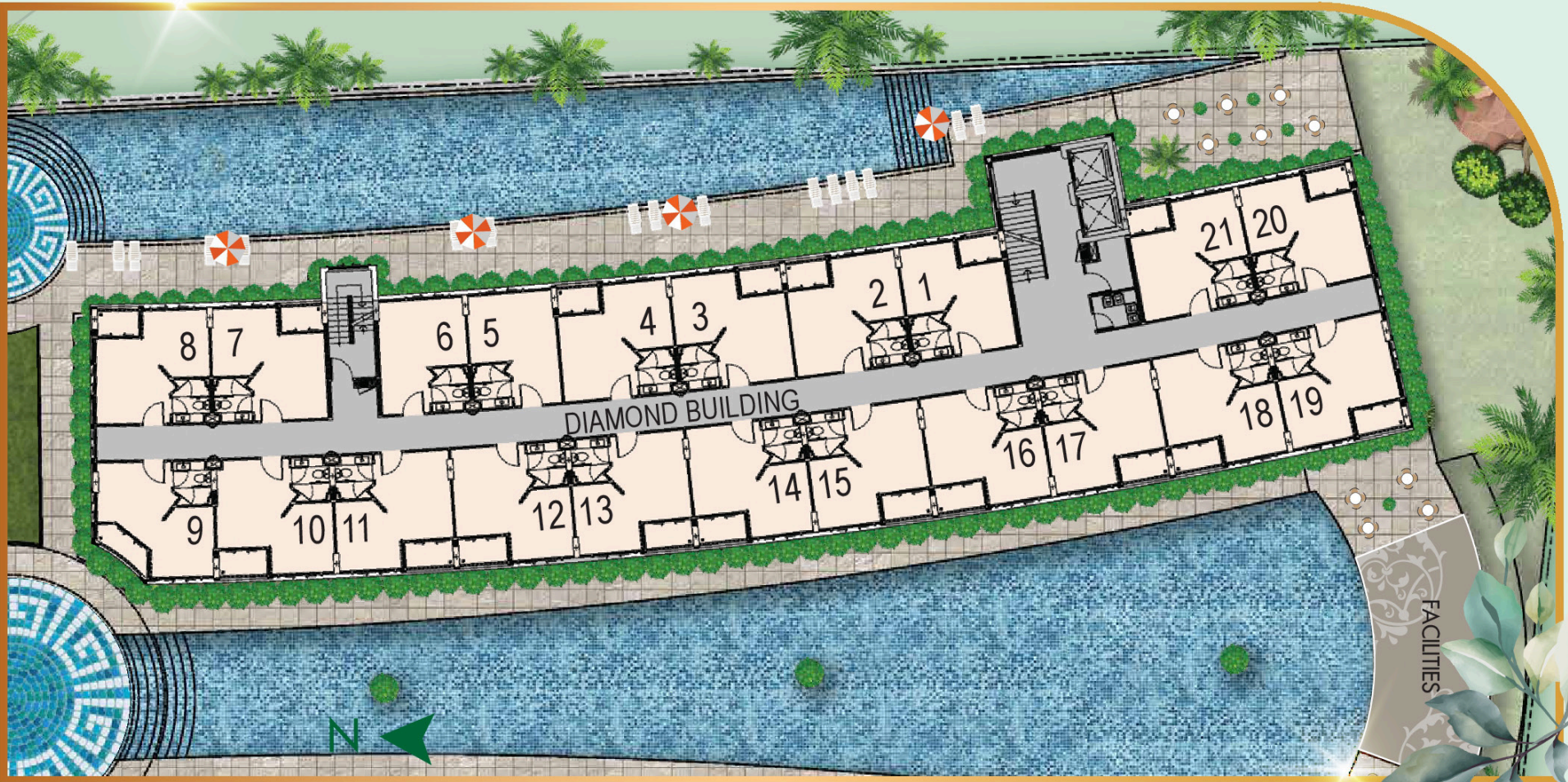
APUS

BELLA



DIAMOND BUILDING

3RD - 8TH FLOOR





**BEST AFFORDABLE
CONDO DEVELOPMENT**
(Eastern Seaboard)



**BEST BOUTIQUE
DEVELOPER**



GLOBAL TOP GROUP
DELIVERING OUTSTANDING DEVELOPMENTS

A private limited company incorporated and existing under the laws of Thailand with the Registration number 02055531341.
All renderings, maps and plans presented herein are intended for illustration only. These renderings and maps do not represent the exact size, location, design, a function of the structural or otherwise plan elements.
proposal for the development the Company reserve the right to change details without prior notice.